



D Montageanleitung

F Notice de montage

NL Handleiding voor de montage

CZ Monzážní návod

HU Szerelési útmutató

TR Montaj talimatı

GB Assembly instructions

I Istruzione di montaggio

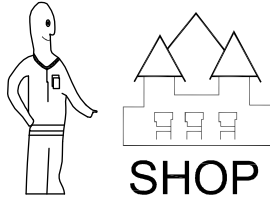
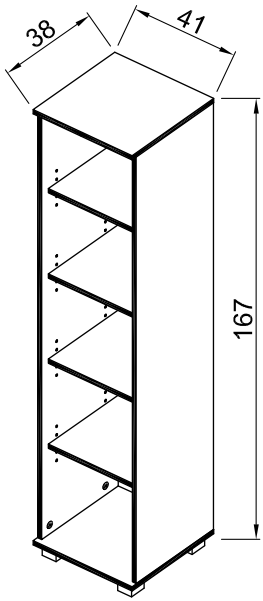
PL Instrukcja montaży

SK Návod na montáž

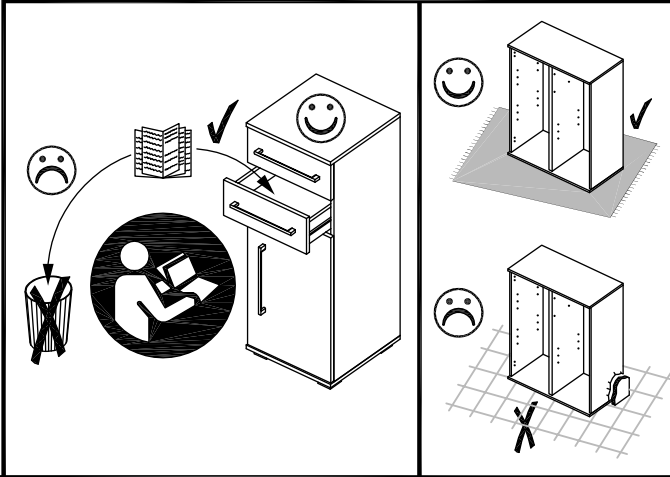
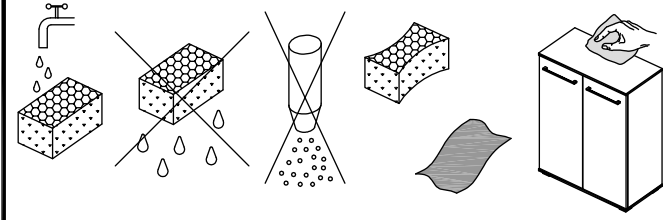
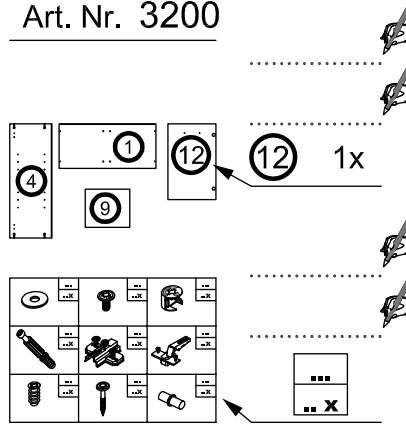
RO Instrucțiuni de montaj

RU ИНСТРУКЦИЯ ПО МОНТАЖУ

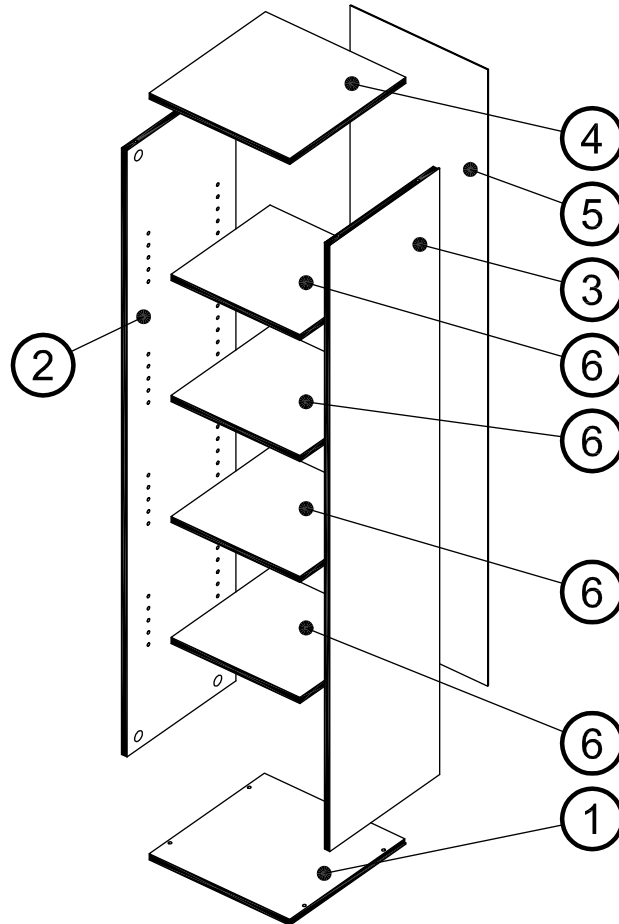
Art. Nr. 3200

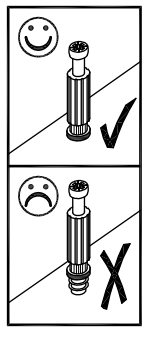
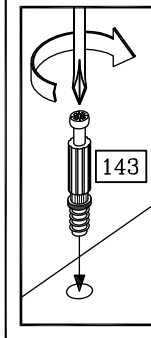
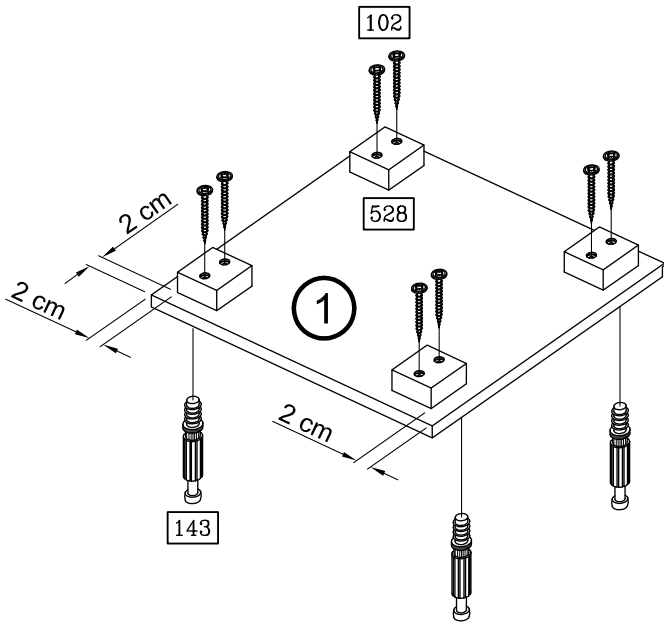
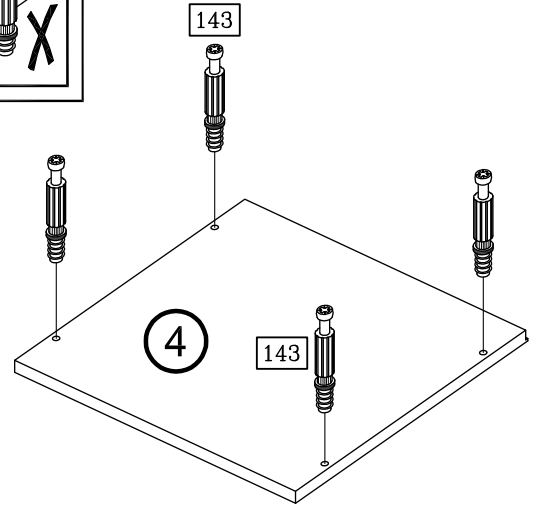
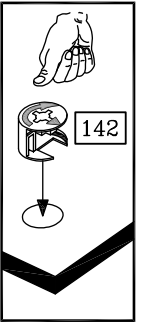
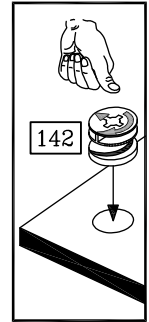
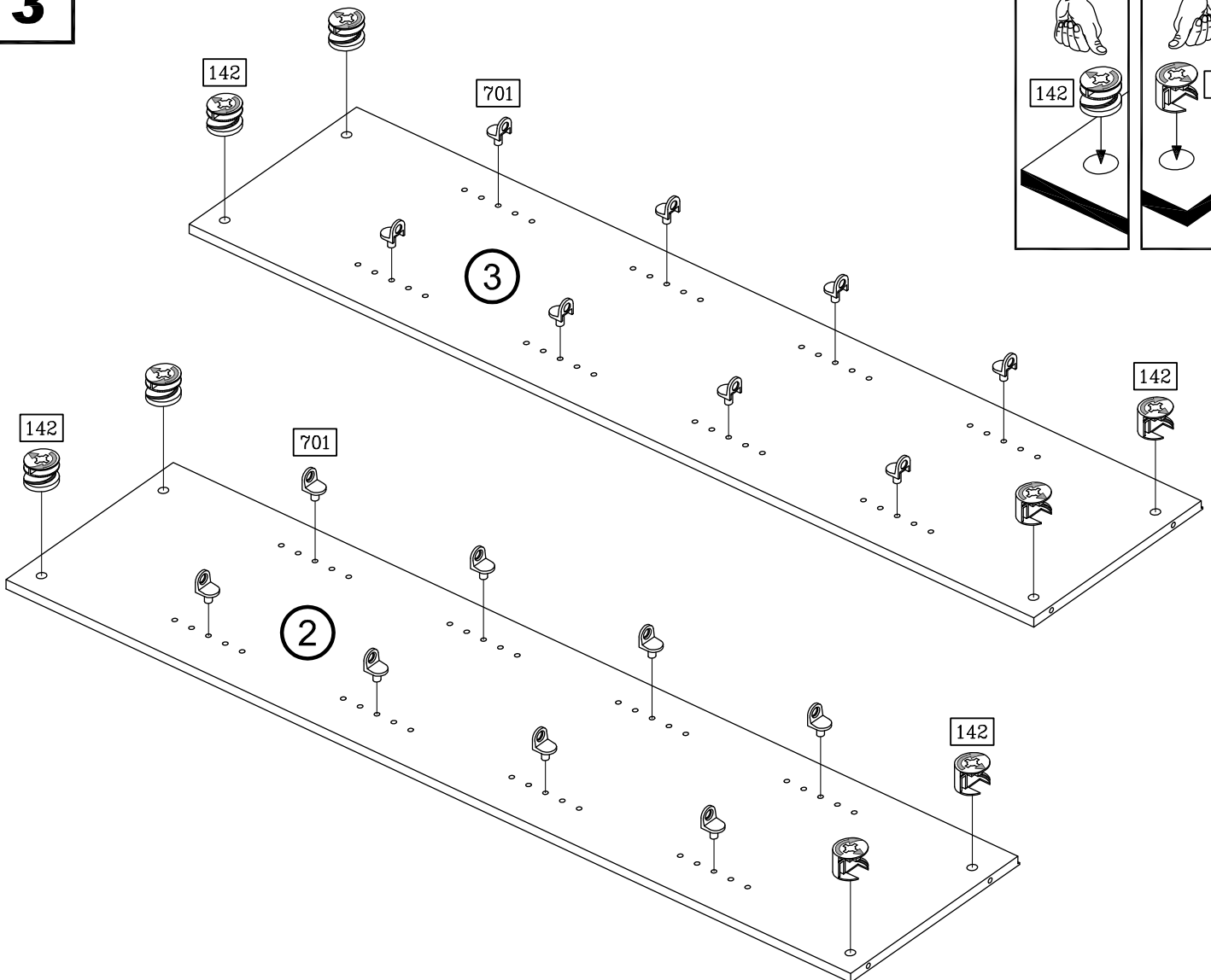


Art. Nr. 3200



 3,5 x 35 102 8x	 Ø 15 x 11,5 142 8x
 6 x 44 143 8x	 528 4x
 3,5 x 15 698 16x	 701 16x
 2,7 x 20 906 38x	

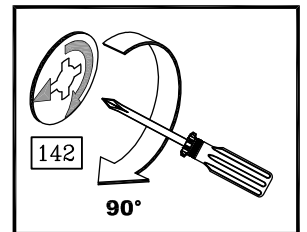
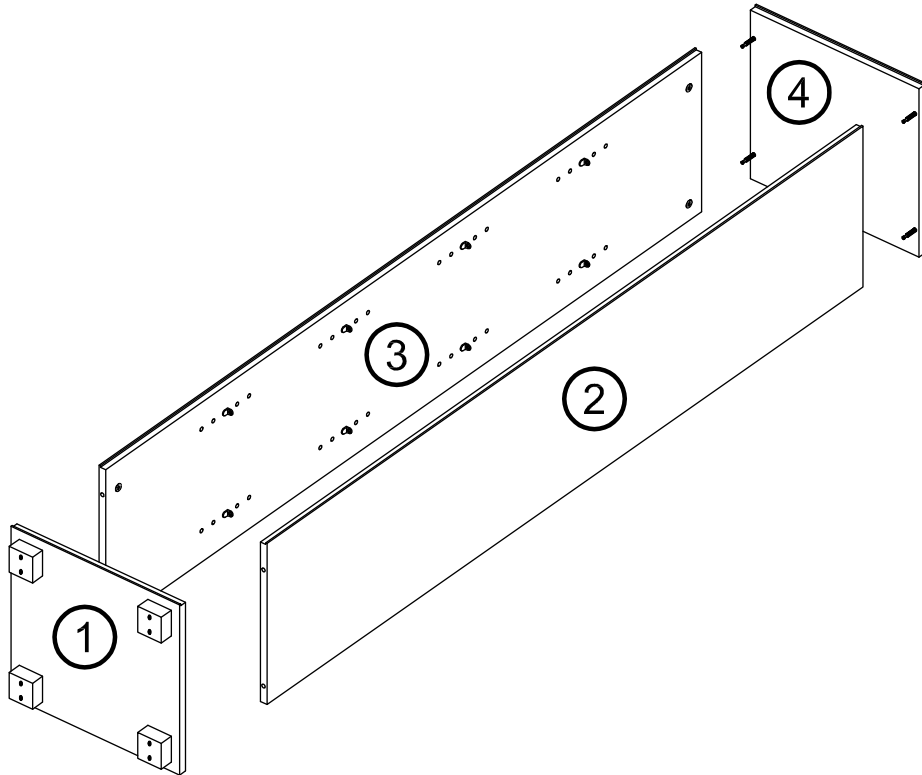


1**2****3**

3200-1

2/4

4



5

