



D Montageanleitung

F Notice de montage

NL Handleiding voor de montage

CZ Montážní návod

HU Szerelési útmutató

TR Montaj talimatı

GB Assembly instructions

I Istruzione di montaggio

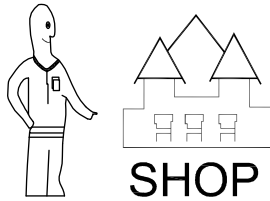
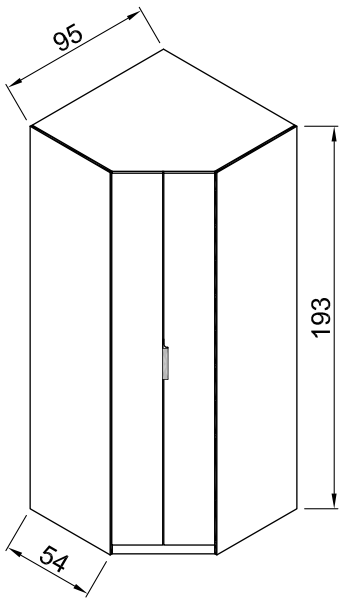
PL Instrukcja montażu

SK Návod na montáž

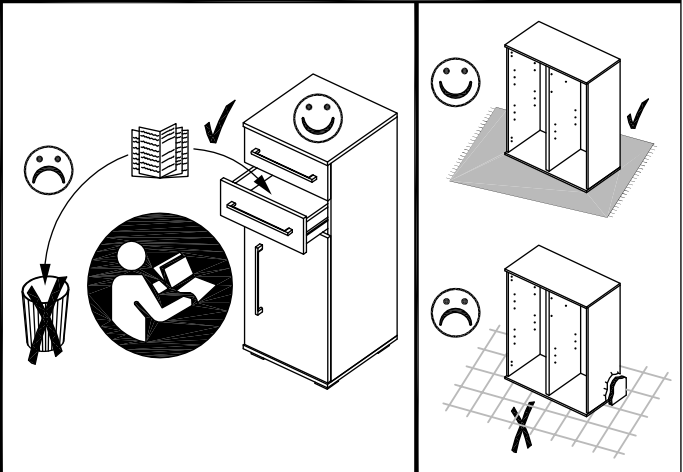
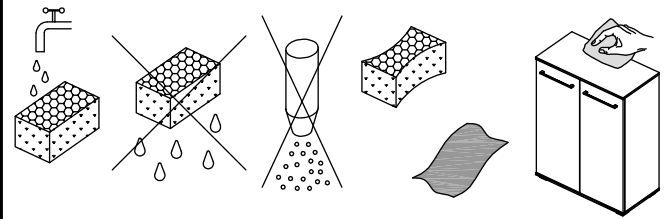
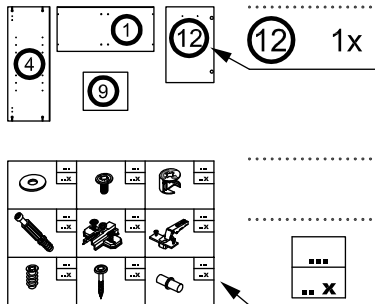
RO Instrucțiuni de montaj

RU ИНСТРУКЦИЯ ПО МОНТАЖУ

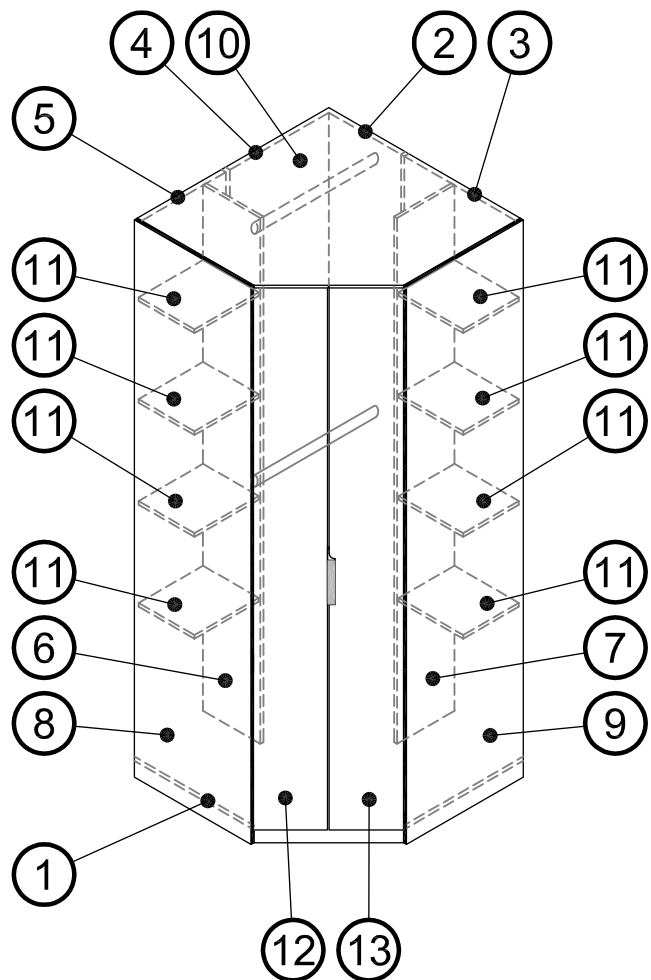
Art. Nr. 1041-Lö

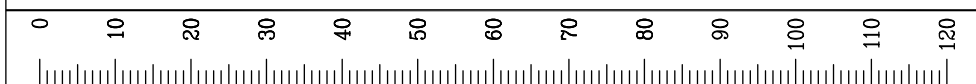
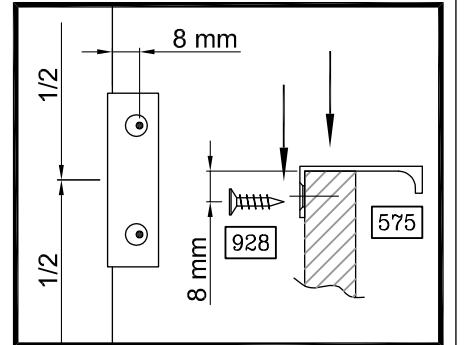
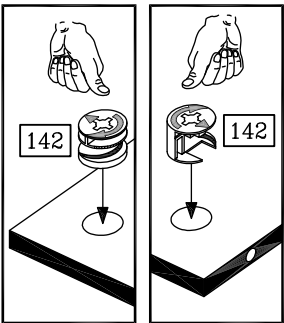
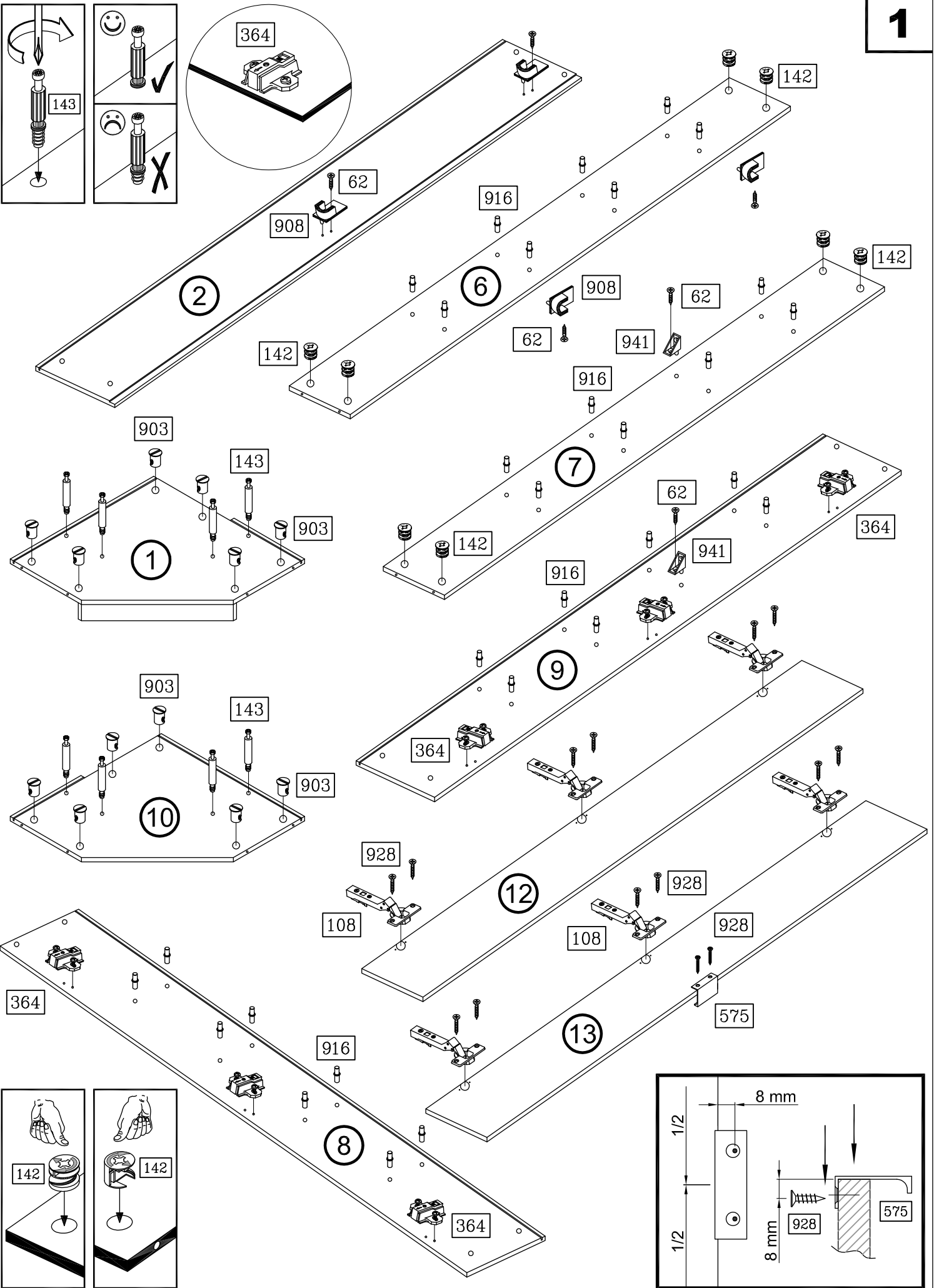
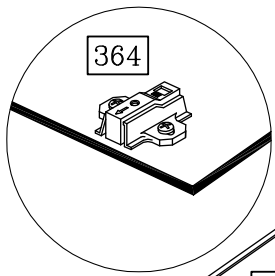
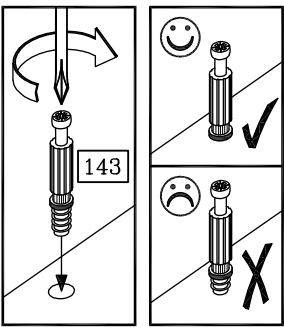


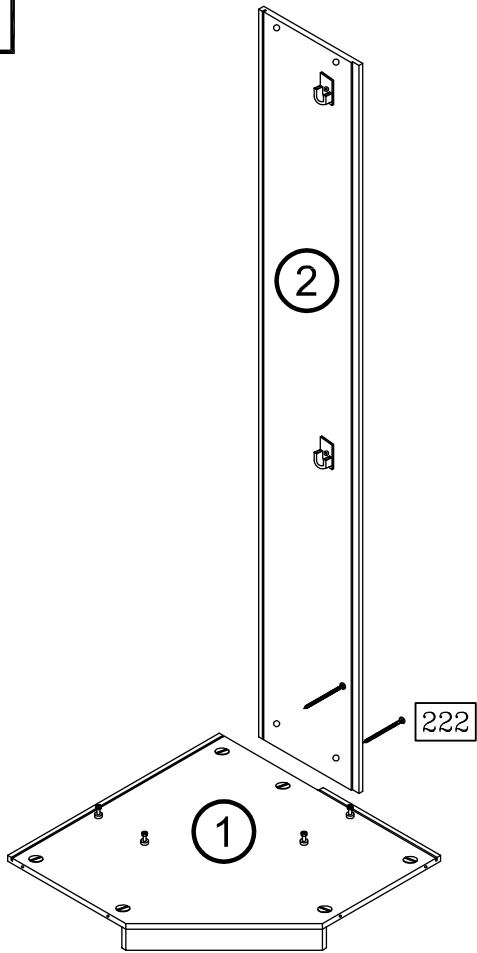
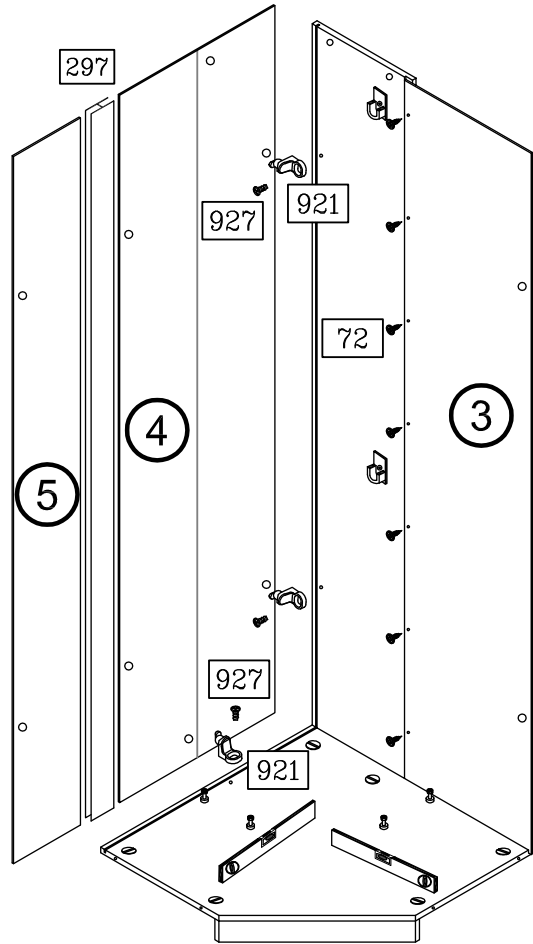
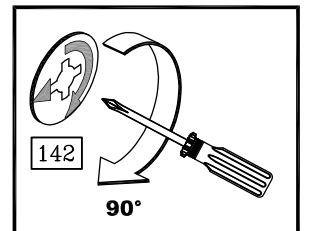
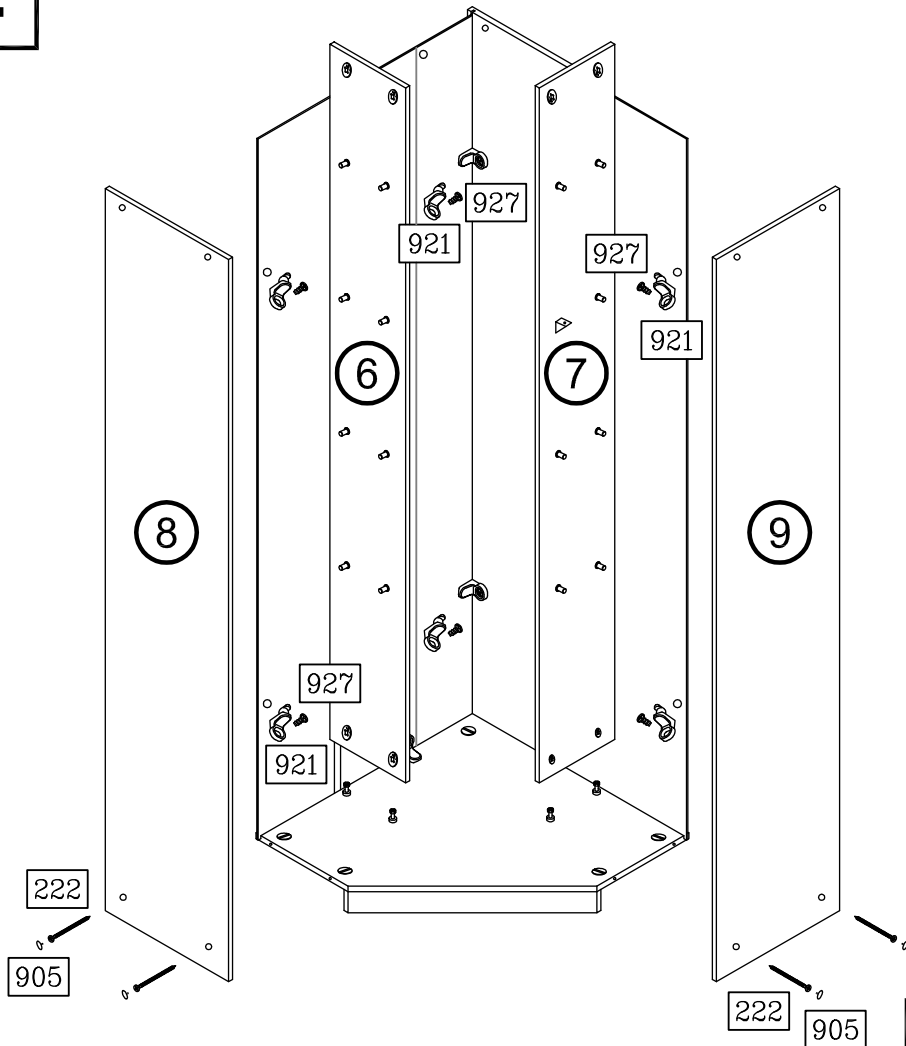
Art. Nr. 1041



62 8x	72 7x	108 6x
3,5 x 13	4x13	
142 8x	143 8x	222 12x
Ø 15 x 11,5	6 x 44	4,5 x 55
295 2x	297 1x	364 6x
563 mm	1834 mm	
928 2x	575 1x	903 12x
4 x 15		Ø 12 / 2,5
908 4x	916 30x	921 10x
927 10x	928 12x	941 2x
6,3 x 11	4 x 15	

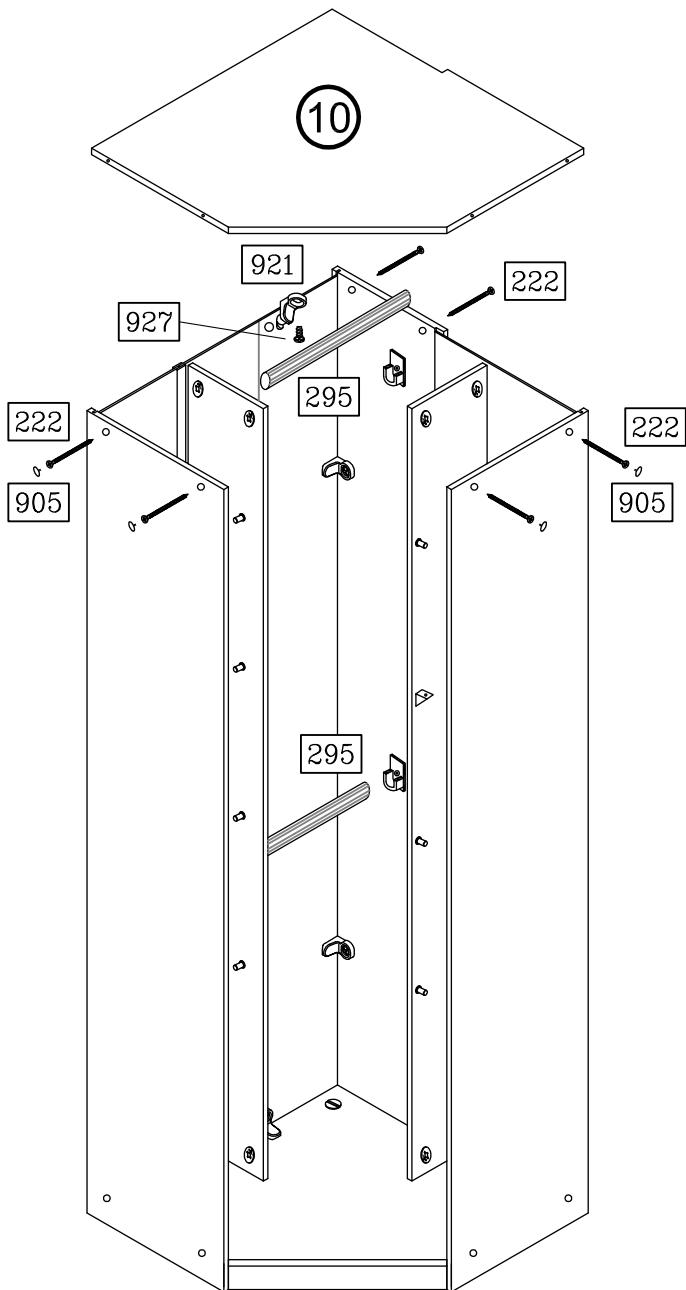
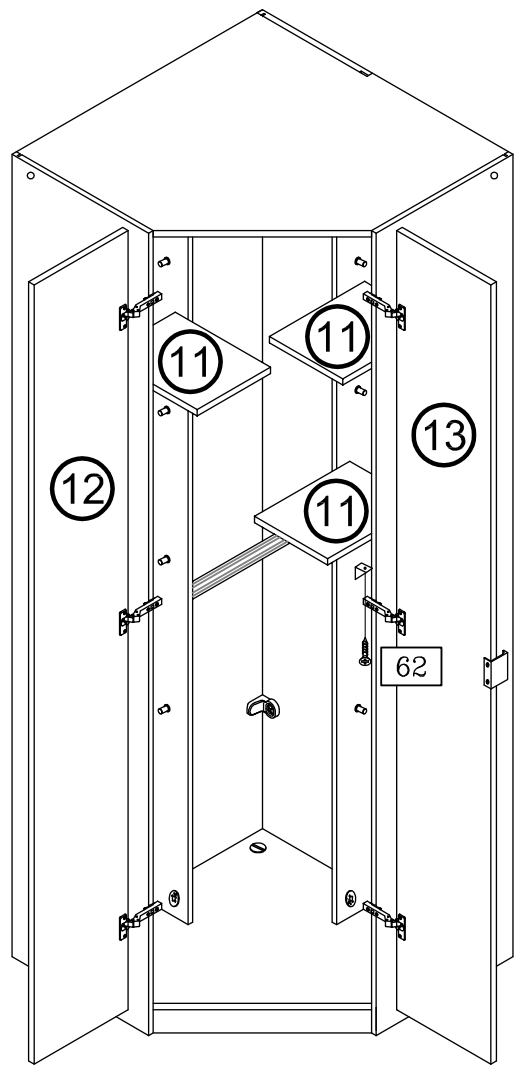
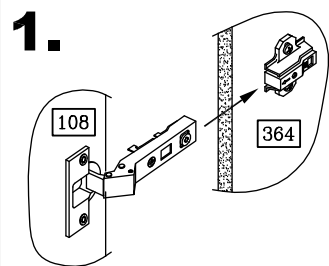
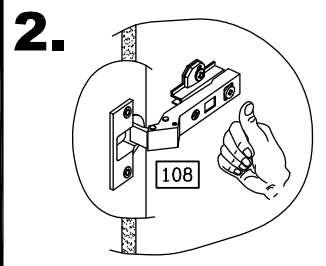




2**3****4**

1041-Lö-1

3/4

5**6****1.****2.****7**