



# 10 Gigabit PCIe Network Adapter

---



TX401



Blazing-Fast 10 Gbps Networking



Multi-Speed Compatibility



Low-Profile Bracket

# Highlights

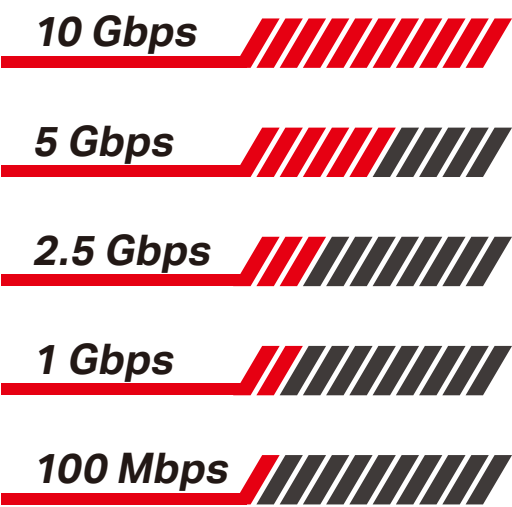
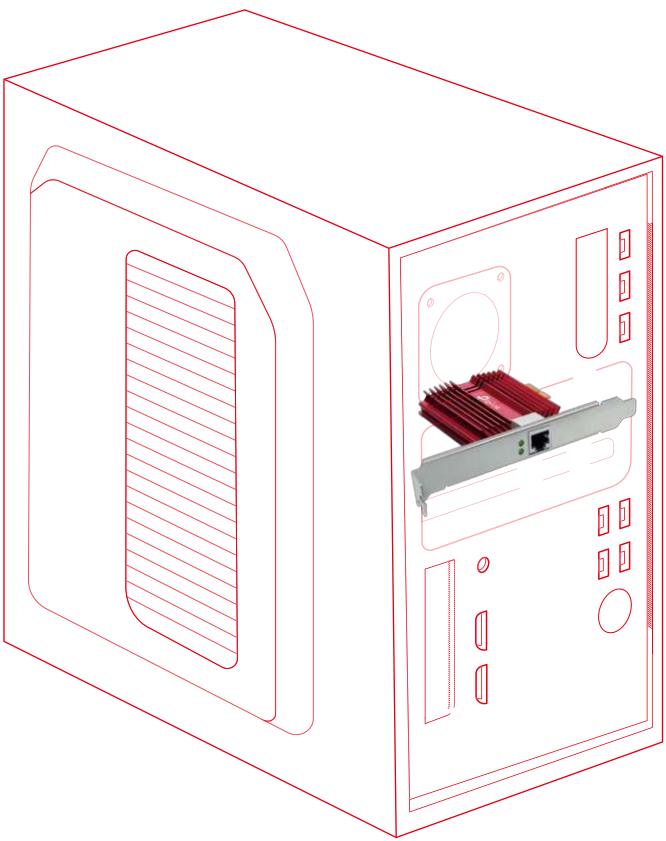
## Blazing-Fast 10 Gbps Networking

Combined with the latest 10GBase-T Technology, TX401 delivers extreme speeds of up to 10 Gbps, which is 10× faster than typical Gigabit adapters, guaranteeing smooth data transmissions for all your bandwidth-intensive tasks. This will lead you to a new era of 10 Gbps home networking.<sup>†</sup>



## Versatile Compatibility

With extreme speed and ultra-low latency, 10GBase-T is backwards compatible with Fast Ethernet and Gigabit Ethernet, automatically negotiating between higher and lower speed connections.

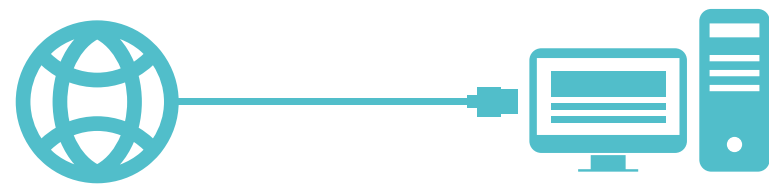


Multi-Speed Compatibility

# Highlights

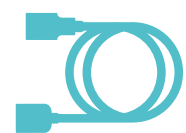
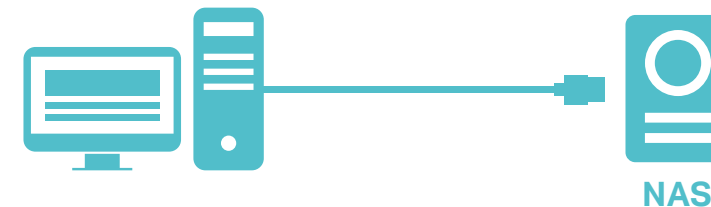
## 10 Gbps Internet Access

Make Full Use of Your High-Speed Internet Access



## 10 Gbps NAS Connection

Lightning-Fast Local Data Transmissions



### CAT6A Ethernet Cable

To maximize TX401's performance, a 1.5 m CAT6A Ethernet Cable is included—rated for up to 10 Gbps while a regular cable is only rated for 1 Gbps.



### Low-Profile and Full-Height Brackets

In addition to the standard bracket, a low-profile bracket is provided for mini tower computer cases. Customized options give you the flexibility to find a bracket that perfectly fits your board design.



### Comprehensive System Support

Fully compatible with Windows 10/8.1/8/7, Windows Servers 2019/2016/2012 R2, and Linux to meet your diverse operating system needs.<sup>‡</sup>

# Specifications

## Hardware Features

- Standards: IEEE 802.3, IEEE 802.3u, IEEE 802.3ab, IEEE 802.3bz, IEEE802.3an, IEEE802.3az, IEEE 802.3x
- Network Media: 10GBASE-T/5GBASE-T/2.5GBASE-T/1000BASE-T/100BASE-TX
- Data Rates:
  - 100 Mbps, 1 Gbps, 2.5 Gbps, 5 Gbps, 10 Gbps for Half-Duplex mode,
  - 200 Mbps, 2 Gbps, 5 Gbps, 10 Gbps, 20 Gbps for Full-Duplex mode
- Flow Control: 802.3x
- Interface: 1× PCI Express 3.0 x4, 1× RJ45 Gigabit/Megabit Port
- LEDs: 10 Gbps Link/Act, 5 / 2.5 / 1 Gbps and 100 Mbps Link/Act
- Dimensions: 120.8 × 98.2 × 21.5 mm (4.8 × 3.9 × 0.8 in)

## Others

- Package Contents
  - 10 Gigabit PCIe Network Adapter (TX401)
  - Standard/Low-Profile Brackets
  - Quick Installation Guide
  - Resource CD
  - 1.5 m CAT6A Ethernet Cable
- Certification
  - FCC, CE, RoHS
- System Requirements
  - Windows 10/8.1/8/7, Windows Servers 2019/2016/2012 R2, Linux<sup>‡</sup>
- Environment
  - Operating Temperature: 0°C~40°C (32°F ~104°F)
  - Operating Humidity: 10%~90% non-condensing
  - Storage Humidity: 5%~90% non-condensing



For more information, please visit  
[https://www.tp-link.com/products/details/?model=TX401\\_V1](https://www.tp-link.com/products/details/?model=TX401_V1)  
or scan the QR code left

Attention: This device may only be used indoors in all EU member states and EFTA countries.  
Specifications are subject to change without notice. TP-Link is a registered trademark of TP-Link Technologies Co., Ltd. Other brands and product names are trademarks or registered trademarks of their respective holders. Copyright ©2020 TP-Link Technologies Co., Ltd. All rights reserved.  
<sup>†</sup>Maximum wired data throughput rates are the physical rates derived from IEEE Standard 802.3 specifications. Actual wired data throughput is not guaranteed and will vary as a result of environmental factors, Ethernet cable class, and computer performance.  
<sup>‡</sup>To ensure compatibility, you may need to update the adapter's drivers after an OS update. You can check the full list of OS support in the download center at [tp-link.com/download-center](https://www.tp-link.com/download-center).