



D Montageanleitung

F Notice de montage

NL Handleiding voor de montage

CZ Monzážní návod

HU Szereelési útmutató

TR Montaj talimatı

GB Assembly instructions

I Istruzione di montaggio

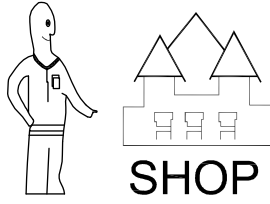
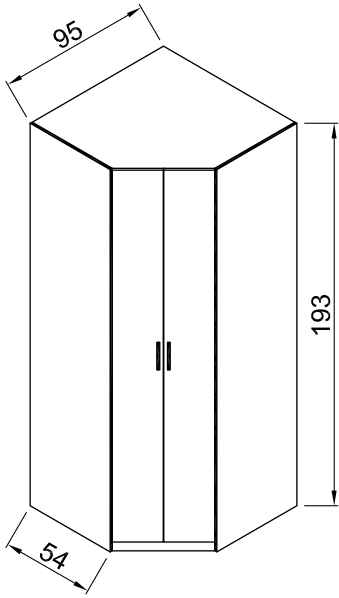
PL Instrukcja montaży

SK Návod na montáž

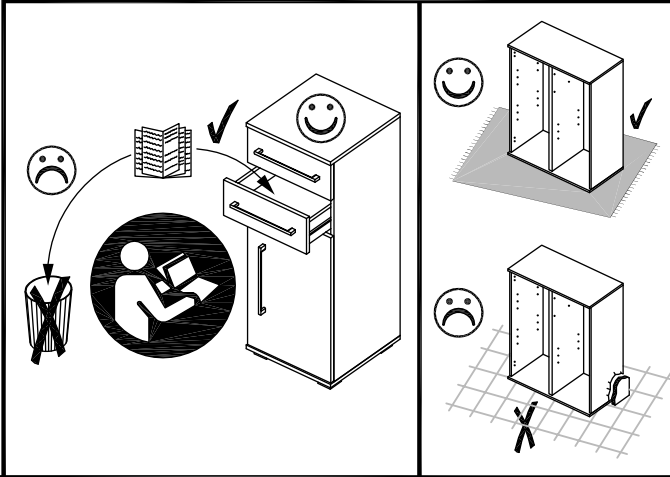
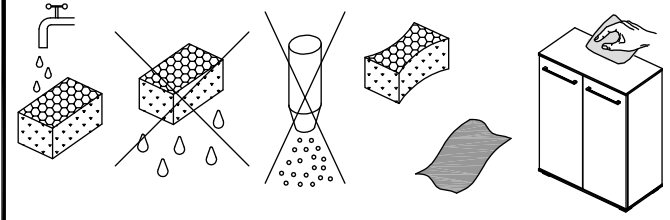
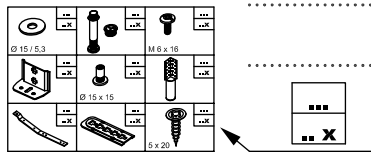
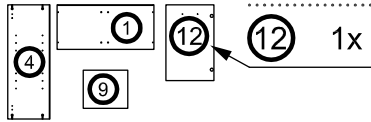
RO Instrucțiuni de montaj

RU ИНСТРУКЦИЯ ПО МОНТАЖУ

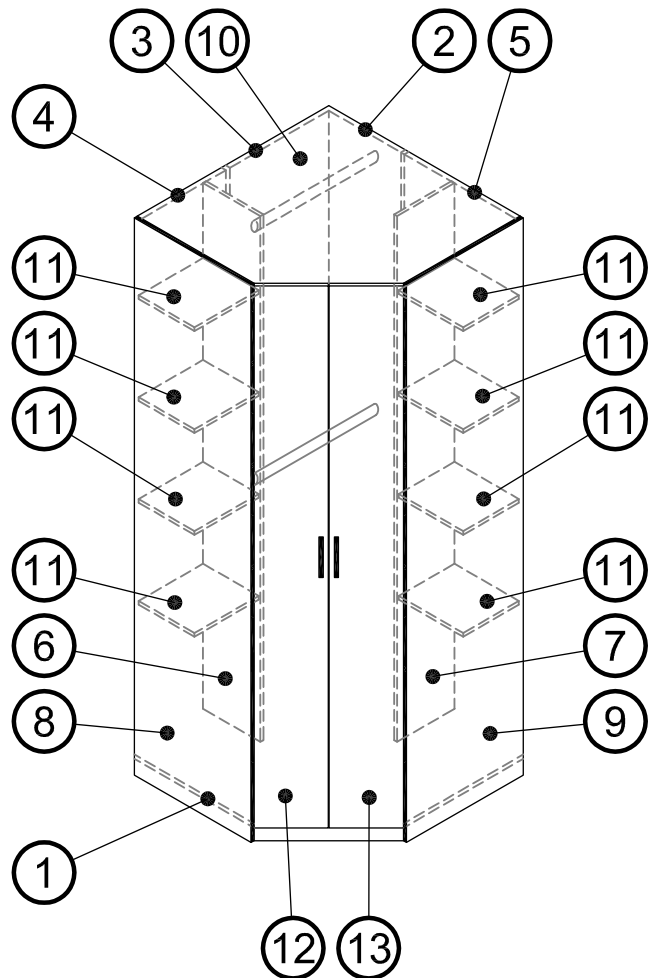
Art. Nr. 1041

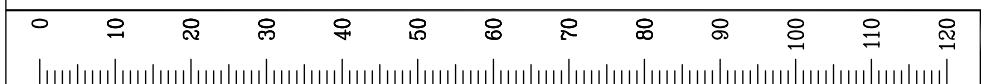
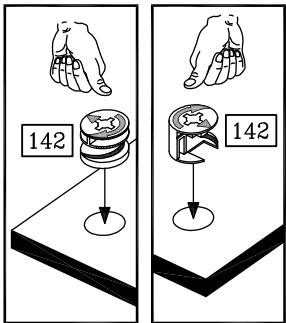
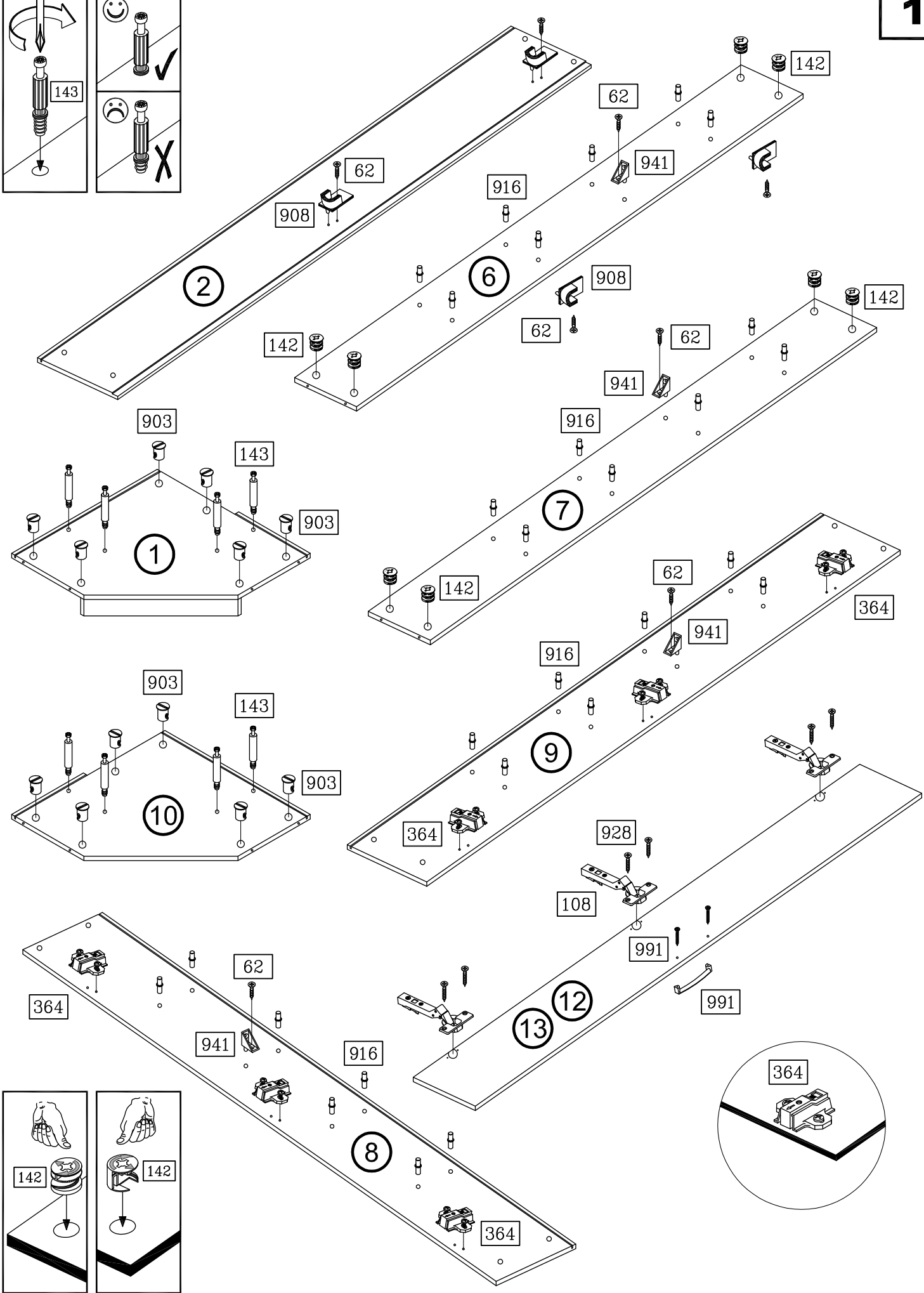
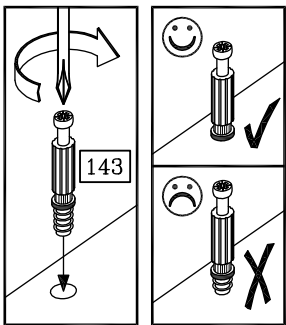


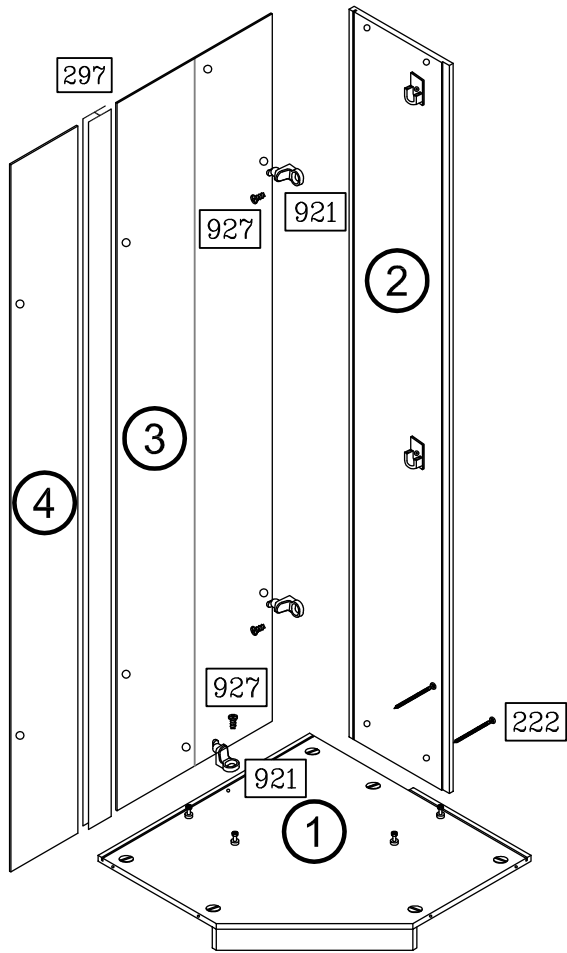
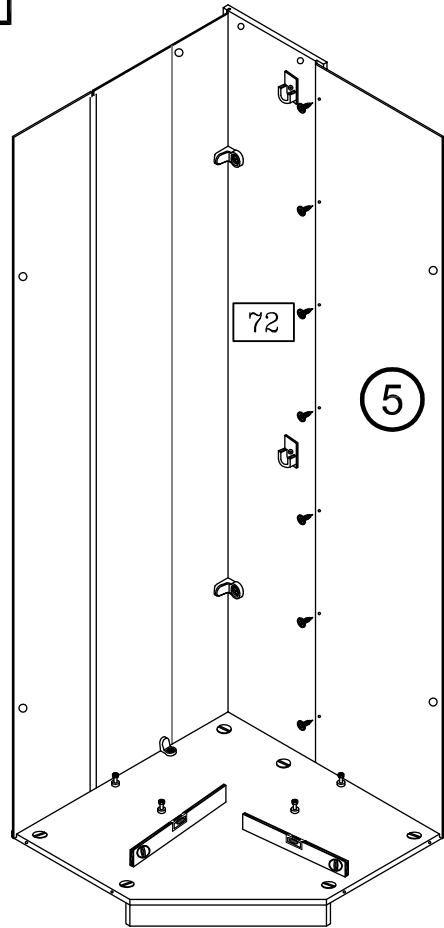
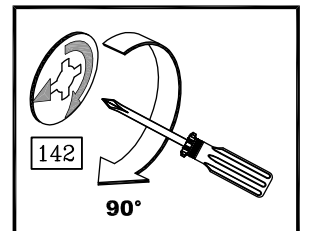
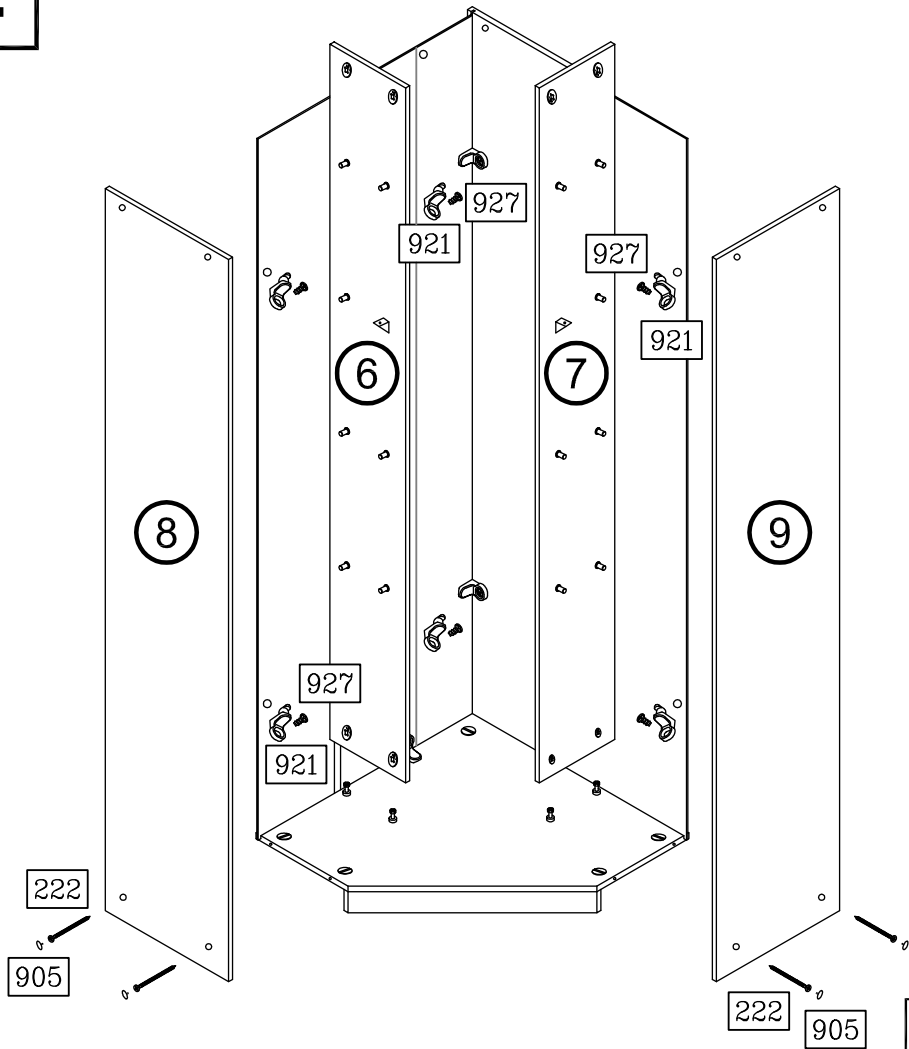
Art. Nr. 1041



	62 12x		72 7x		108 6x
3,5 x 13		4x13			
	142 8x		143 8x		222 12x
Ø 15 x 11,5		6 x 44		4,5 x 55	
	295 2x		297 1x		364 6x
563 mm		1834 mm			
	903 12x		905 8x		908 4x
		Ø 12 / 2,5			
	916 28x		921 8x		927 8x
				6,3 x 11	
	928 12x		941 4x		991 2x
4 x 15					

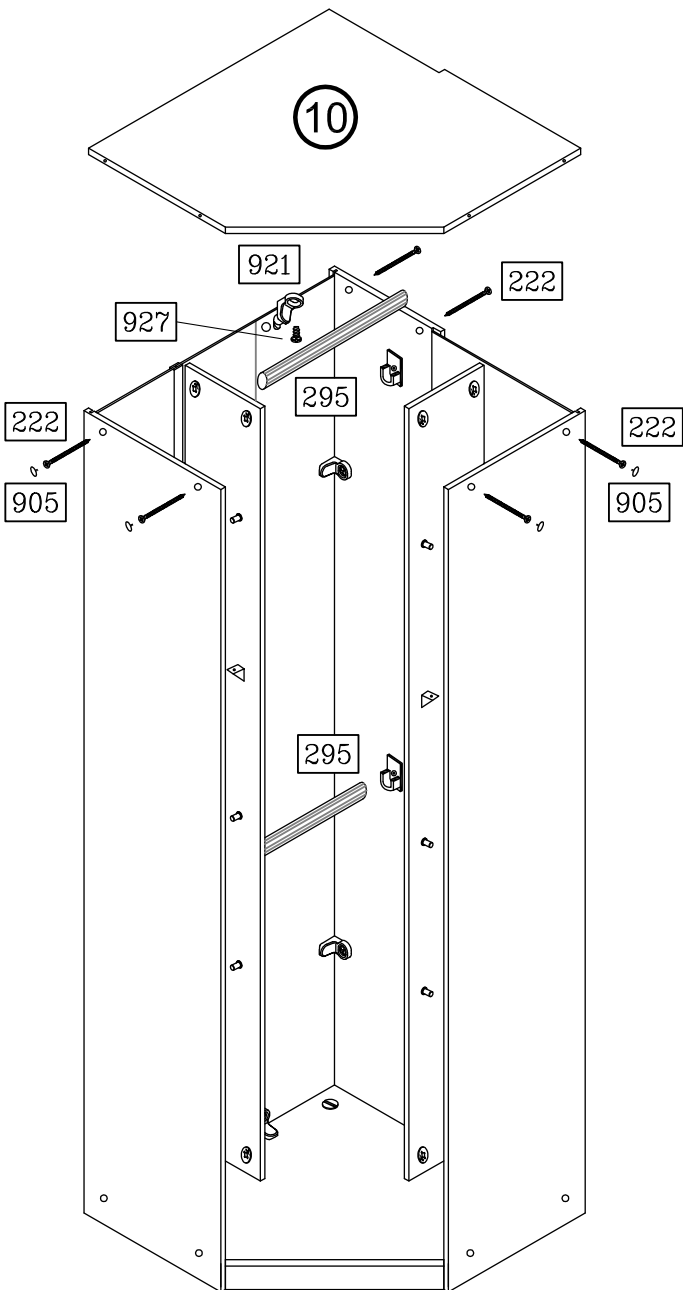
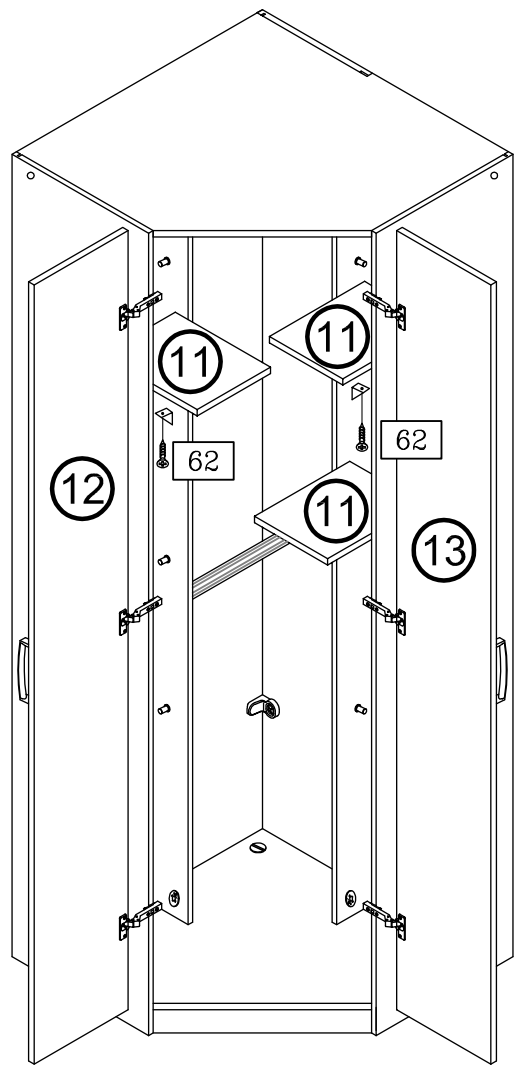
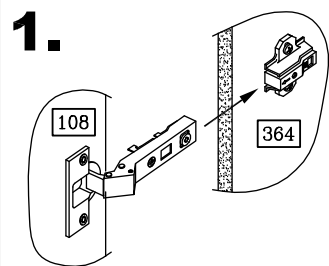
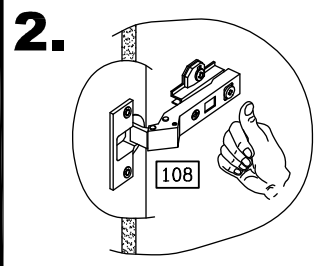




2**3****4**

1041-4

3/4

5**6****1.****2.****7**