




AX1500 Next-Gen Wi-Fi 6 Router


Next-Gen Wi-Fi For All





Archer AX10

 Faster AX Wi-Fi
Speeds up to 1.5 Gbps

 Ultra-Low Latency
by AX Tech

 Connect More Devices
with OFDMA

 Responsive Processing
with 1.5 GHz Triple-Core CPU

 Full Gigabit
Ports

Highlights

Wi-Fi 6 | 802.11 AX^E Future-Proof Your Wi-Fi

Improved Efficiency, More Connections

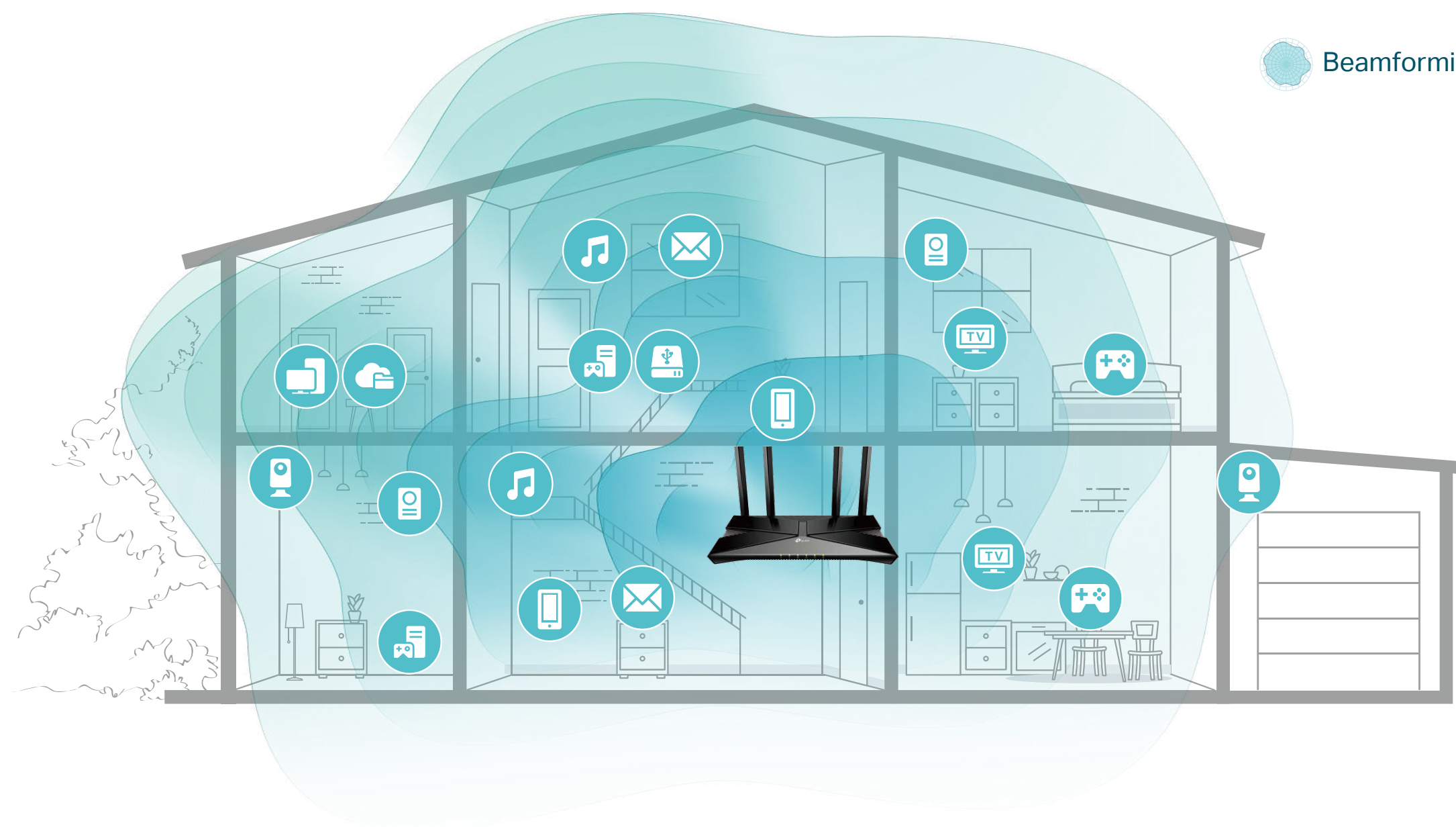
Add more Wi-Fi devices to your network without dragging the performance, as Archer AX10 with Wi-Fi 6 builds a more efficient network that increases the average throughput by 4 times and serves more devices.

Immersive Gaming, Smooth Streaming

Enjoy stable network for online gaming and live streams with flawless video and clear audio. OFDMA allows clients to transmit both on uplink and downlink using one band at one time, which cut the latency and ensures a responsive network.

Cover 3+ Rooms with Minimal Interference

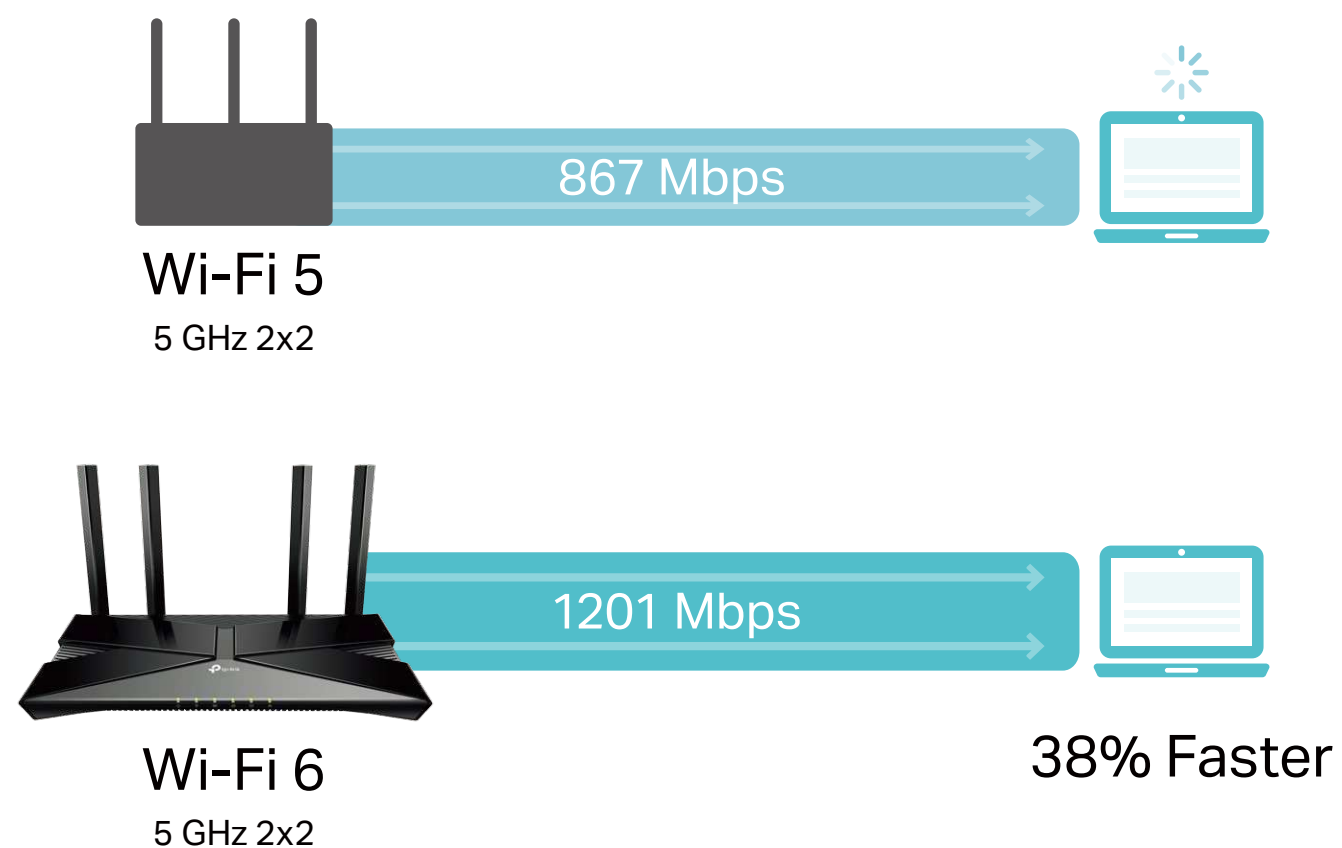
With clearer and stronger signal generated with Wi-Fi 6 and Beamforming technology, Archer AX10 delivers data to devices far away by focusing less-interfered wireless signal towards them.



Highlights

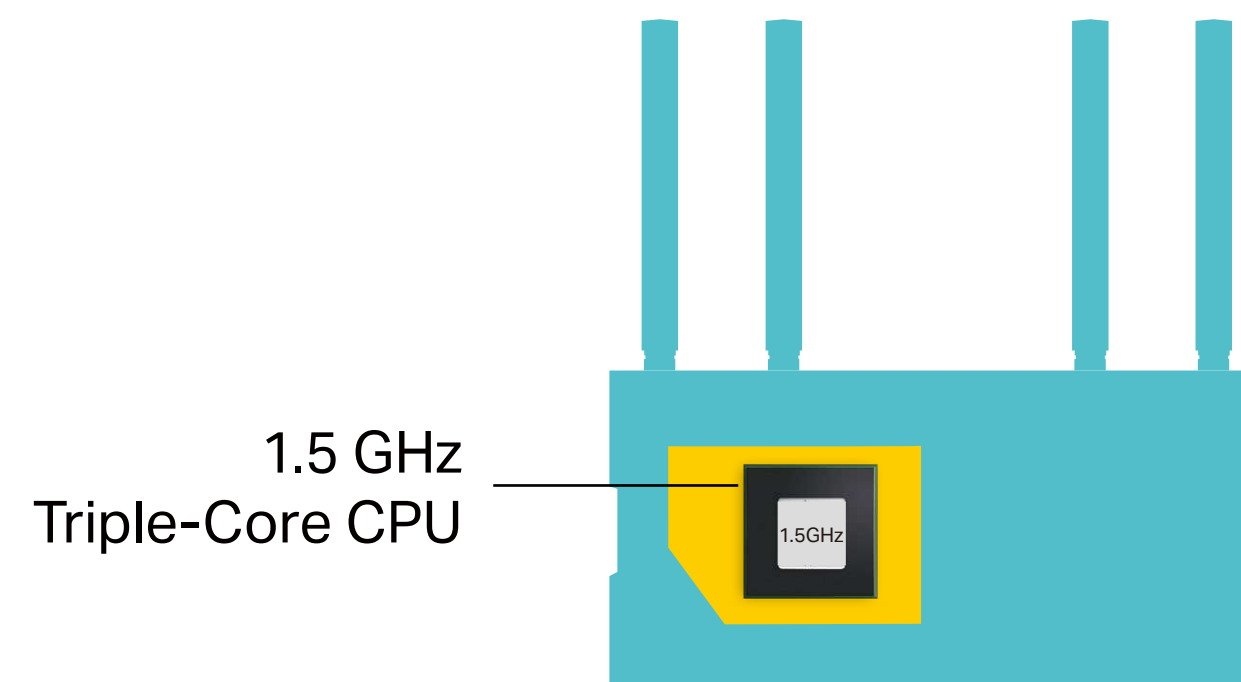
Faster Wireless Connection

4-Streams Wi-Fi offers connection at over 1 Gbps speed for newer mobile devices, reducing wait time by 30% while downloading huge files including 4K movies and games.



Powerful and Stable

Every click you make, responds quicker. A 1.5 GHz triple-core CPU handles data throughput up to multi-gigs and minimizes the latency within your home network, delivering you a smooth experience.

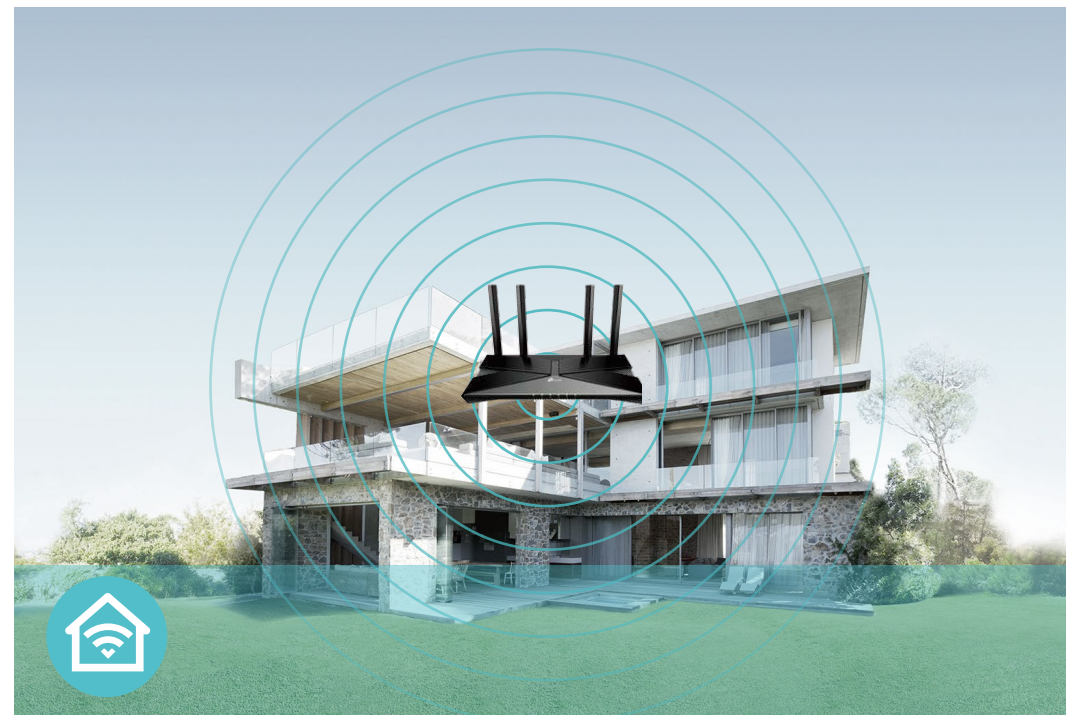


Features



Speed

- **AX Tech** – 802.11ax (also known as Wi-Fi 6) features advanced technologies including OFDMA and 1024QAM, drastically increasing the speed and efficiency of the entire network
- **Ultimate Wireless Speed** – 300 Mbps on 2.4 GHz (802.11n) + 1201 Mbps on 5 GHz (802.11ax)
- **1.5 GHz triple-core CPU** – Handles data throughput up to multi-gigs and minimizes the latency within your home network
- **Gigabit Internet Access** – Take full advantages of broadband speeds up to 1 Gbps



Wi-Fi Range

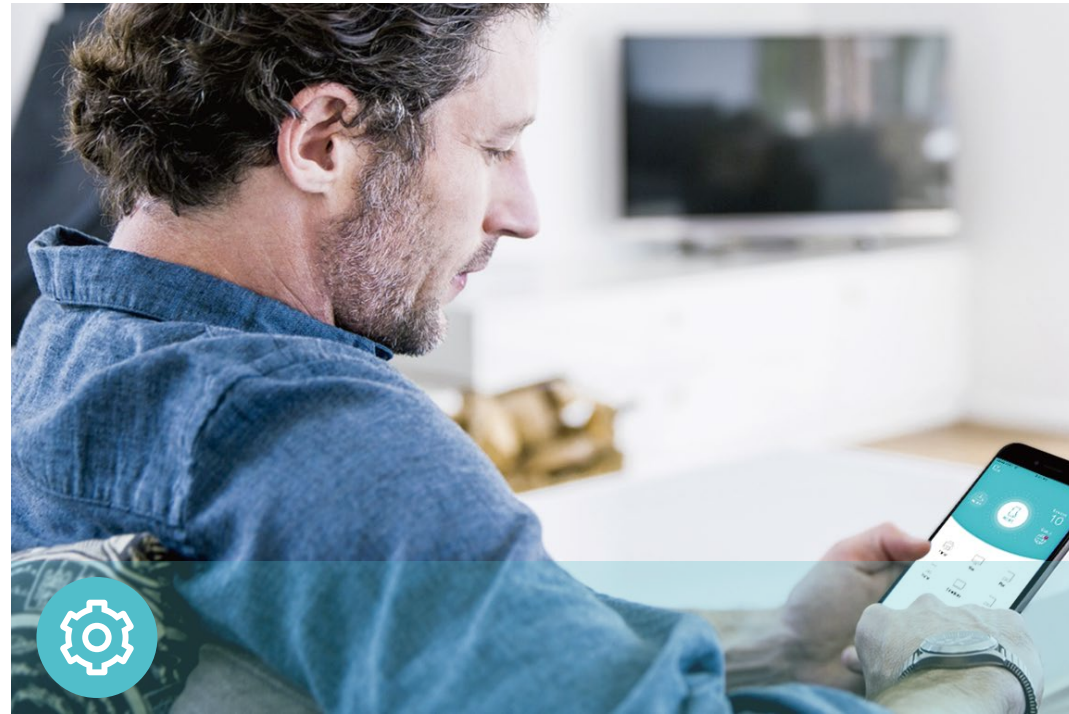
- **Ultimate Range Wi-Fi** – Four external antennas deliver a Wi-Fi signal to every corner of your home, making all of your connections more efficient and stable
- **Beamforming Technology** – Concentrates Wi-Fi signals towards individual devices to ensure stronger connections



Reliability

- **Secure VPN Access** – Connects to a private network with a safe and secure OpenVPN and PPTP VPN connection
- **Airtime Fairness** – Balances bandwidth of connected devices to improve overall throughput and efficiency
- **Smart Connect** – Intelligently switches each device's connection to the optimum available Wi-Fi band
- **Quality of Service** – Prioritizes devices for optimum performance when needed

Features



Ease of Use

- Intuitive Web UI – Ensures quick and simple Installation without hassle
- Fast Encryption – One-touch WPA wireless security encryption with the WPS button
- Easy On/Off – Turn on/off wireless function using the Wi-Fi button
- Power On/Off – Conveniently power on or off your router as required
- Hassle-free Management with Tether App – Network management is made easy with the TP-Link Tether App, available on any Android and iOS device



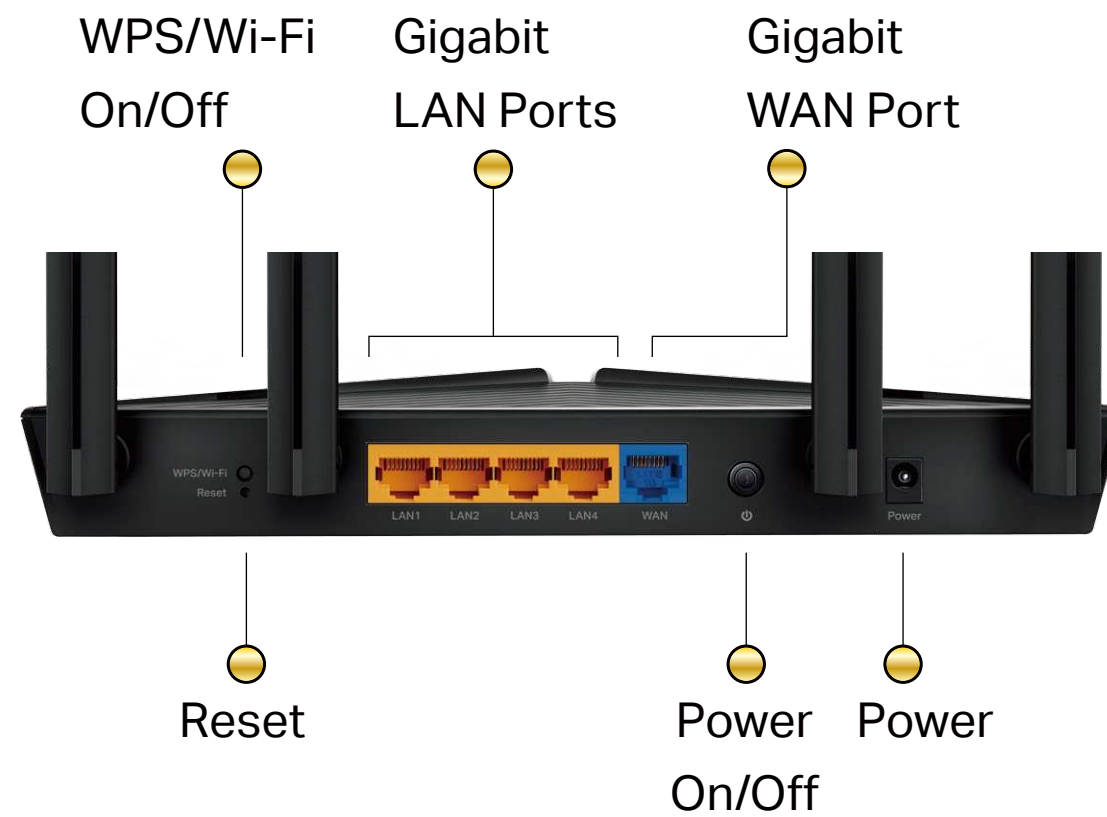
Security

- Guest Network – Keeps your main network secure by creating a separate network for friends and visitors
- Access Control – Establishes a whitelist or blacklist to allow or restrict certain devices to access the internet
- Parental Controls – Restricts internet access time and contents for children devices
- Encryptions for Secure Network – WPA-PSK and WPA2-PSK encryptions provide active protection against security threats

Specifications

Hardware

- Ethernet Ports: One Gigabit WAN Port, four Gigabit LAN Ports
- Hardware: 1.5 GHz Triple-Core CPU
- Buttons: WPS/Wi-Fi Button, Power On/Off Button, Reset Button
- Antennas: Four External Antennas
- External Power Supply: 12V/1A
- Dimensions (W x D x H): 10.2 × 5.3 × 1.5 in (260.2 × 135.0 × 38.6 mm)



Wireless

- Wireless: 1201 Mbps (5 GHz, 11ax) + 300 Mbps (2.4 GHz, 11n), compatible with 11a/b/g/n/ac Wi-Fi standards
- Frequency: 2.4 GHz and 5 GHz
- Transmit Power:
CE: <20dBm(2.4 GHz), <23dBm(5.15 GHz~5.25 GHz)
FCC:<30dBm(2.4 GHz & 5.15 GHz~5.825 GHz)
- Reception Sensitivity:
5 GHz:
11a 6Mbps:-97dBm, 11a 54Mbps:-79dBm
11ac VHT20_MCS0:-96dBm, 11ac VHT20_MCS11:-66dBm
11ac VHT40_MCS0:-94dBm, 11ac VHT40_MCS11:-63dBm
11ac VHT80_MCS0:-91dBm, 11ac VHT80_MCS11:-60dBm
11ax HE20_MCS0:-95dBm, 11ax HE20_MCS11:-63dBm
11ax HE40_MCS0:-92dBm, 11ax HE40_MCS11:-60dBm
11ax HE80_MCS0:-89dBm, 11ax HE80_MCS11:-58dBm
2.4 GHz:
11g 6Mbps:-91dBm, 11a 54Mbps:-74dBm
11n HT20_MCS0:-90dBm, 11n HT20_MCS7:-73dBm
11n HT40_MCS0:-88dBm, 11n HT40_MCS7:-70dBm
- Wireless Function: Enable/Disable Wireless Radio, WMM
- Wireless Security: 64/128-bit WEP, WPA/WPA2, WPA-PSK/WPA2-PSK encryptions

Specifications

Software

- Quality of Service: Device Prioritisation
- WAN Type: Dynamic IP/Static IP/PPPoE/PPTP(Dual Access)/L2TP(Dual Access)
- Management: Access Control, Local Management, Remote Management
- DHCP: Server, DHCP Client List, Address Reservation
- Port Forwarding: Port Forwarding, Port Triggering, UPnP, DMZ
- Dynamic DNS: DynDns, NO-IP, TP-Link
- Access Control: Parental Controls, Local Management Control, Host List, White List, Black List
- Firewall Security: SPI Firewall, IP and MAC Address Binding
- Protocols: IPv4, IPv6
- Guest Network: 2.4 GHz Guest Network, 5 GHz Guest Network

Others

- Certification:
CE, FCC, RoHS
- System Requirements:
Microsoft Windows 98SE/NT/2000/XP/Vista™/7/8/8.1/10, MAC OS, NetWare, UNIX or Linux

Internet Explorer 11, Firefox 12.0, Chrome 20.0, Safari 4.0, or other Java-enabled browser

Cable or DSL Modem

Subscription with an internet service provider (for internet access)
- Environment:
Operating Temperature: 0°C~40°C (32°F ~104°F)
Storage Temperature: -40°C~70°C (-40°F ~158°F)
Operating Humidity: 10%~90% non-condensing
Storage Humidity: 5%~90% non-condensing
- Package Contents
Wireless Router Archer AX10

Power Adapter

RJ45 Ethernet Cable

Quick Installation Guide



For more information, please visit

<http://www.tp-link.com/products/details/Archer-AX10.html>

or scan the QR code left

Attention: This device may only be used indoors in all EU member states and EFTA countries.

Specifications are subject to change without notice. TP-Link is a registered trademark of TP-Link Technologies Co., Ltd. Other brands and product names are trademarks or registered trademarks of their respective holders. Copyright ©2019 TP-Link Technologies Co., Ltd. All rights reserved.

*Maximum wireless signal rates are the physical rates derived from IEEE Standard 802.11 specifications. Actual wireless data throughput and wireless coverage are not guaranteed and will vary as a result of network conditions, client limitations, and environmental factors, including building materials, obstacles, volume and density of traffic, and client location.

*Use of OFDMA and 1024-QAM requires clients to also support those functions.

*4x average throughput refers to 4x increase in median throughput under dense environment (i.e. 8+ Wi-Fi 6 devices connected with combined speeds not higher than ISP offers) compared to a 2x2 11ac wave 2 router.

*1,000 Mbps internet speeds require compatible service plans and equipment.